



WESTERN AUSTRALIAN
LOCAL GOVERNMENT ASSOCIATION

Statewide Report on the Resource Recovery & Rebate Scheme

PREPARED BY THE



MUNICIPAL WASTE ADVISORY COUNCIL
"Getting the Environment Right"

Period: 13
End Date: 31-Dec-04

Recycling Report for Period 13

Period Ends: 31-Dec-04 n(councils)=78

Recycling/Recovery Totals by Source and Waste Type

Collection System	Dry Recyclables (Tonnes)	Green/Organic Waste (Tonnes)	Total (Tonnes)
Kerbside	46,736	289	47,026
Vergeside	735	22,177	22,912
Dropoff	10,577	22,416	32,993
Resource Recovery	1,247	47,404	48,651
Sub Total (NGW)	59,295	92,286	151,581

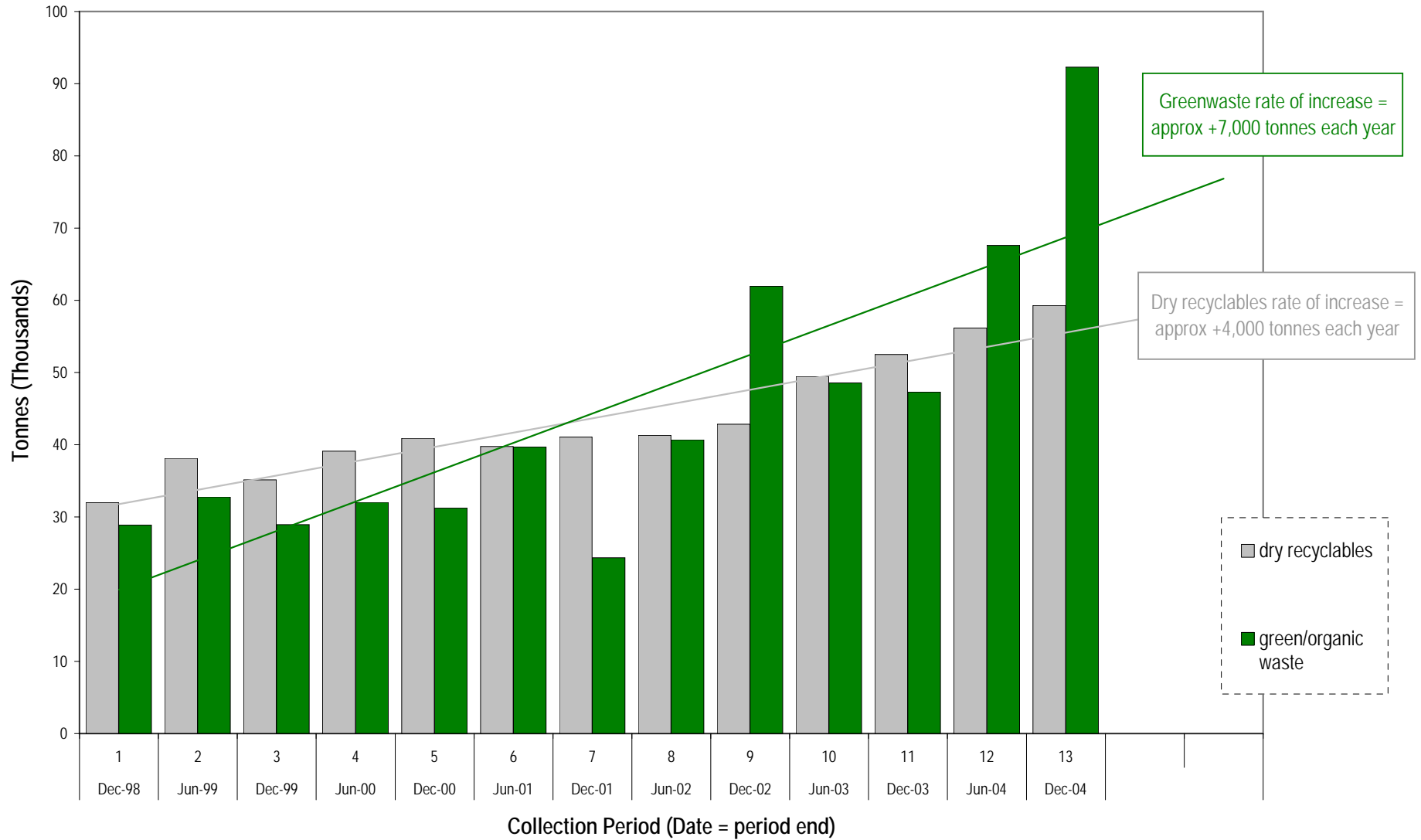
Recycling/Recovery Totals by Class of Council and Waste Type

Council Type	n (Councils)	Dry Recyclables (Tonnes)	Green/Organic Waste (Tonnes)	Total (Tonnes)
Metropolitan	33	44119	86752	130871
Regional Urban Centre	6	6,199	5,314	11,513
Rural or Remote Council	39	8977	220	9197
Sub Total (NGW)		59,295	92,286	151,581

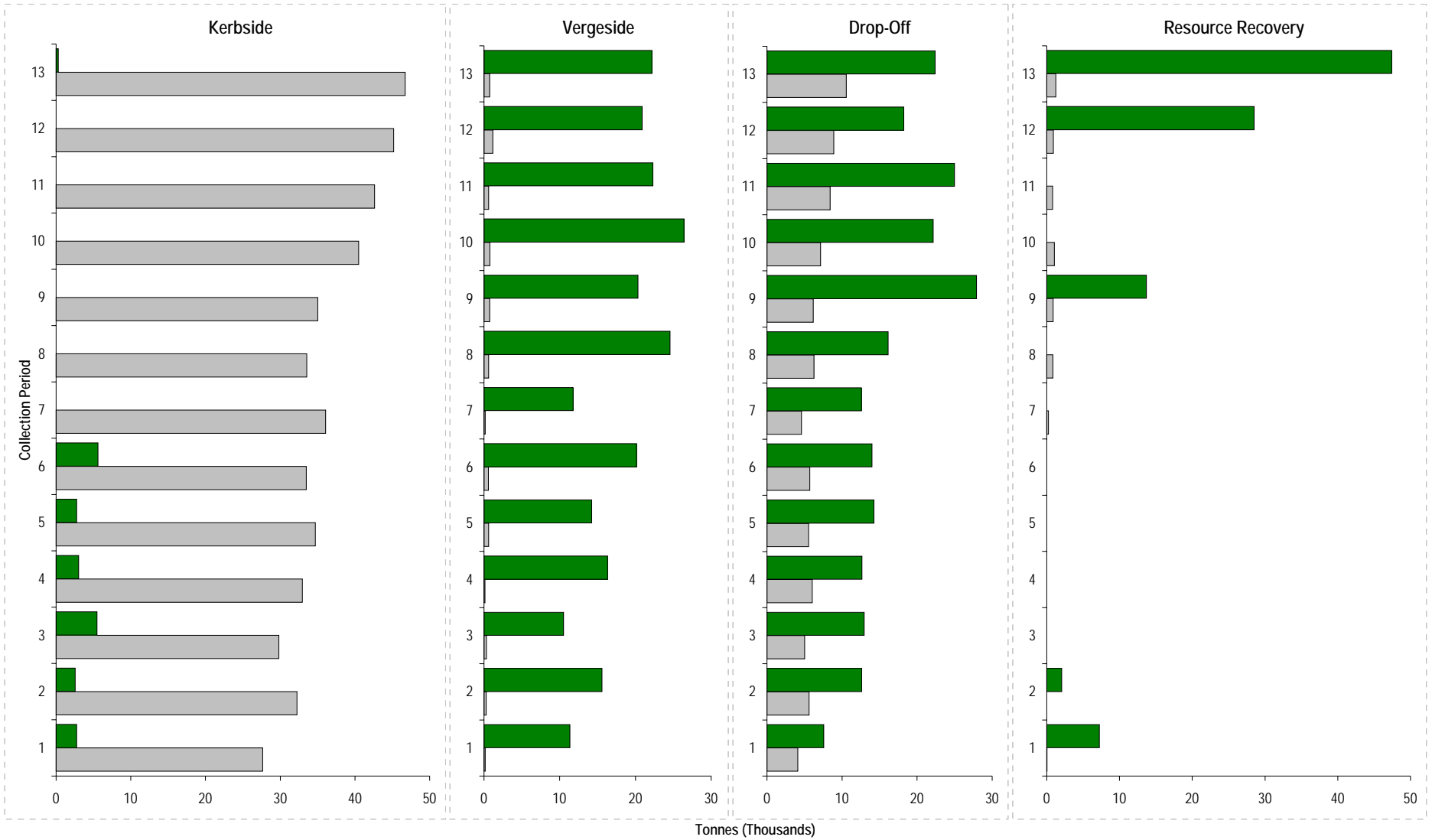
Recycling/Recovery Totals of Key Material Types

Key Material Type	Recycling incl: K/S, V/S & D/off (Tonnes)	Resource Recovery (Tonnes)	Total (Tonnes)
Aluminium	702	68	770
Steel Containers	844	208	1,051
Bulk Steel	8,759	550	9,308
Glass	7,039	304	7,342
PET Plastic	819	44	863
HDPE Plastic	999	44	1,044
Mixed Plastics	134	0	134
ONP	31,434	10,152	41,587
OCC	6,027	2,441	8,469
Mixed Paper	109	316	425
Other - Non Biodegradable	1,182	29	1,211
Other - Biodegradable	0	16,833	16,833
Greenwaste	44,882	17,661	62,543

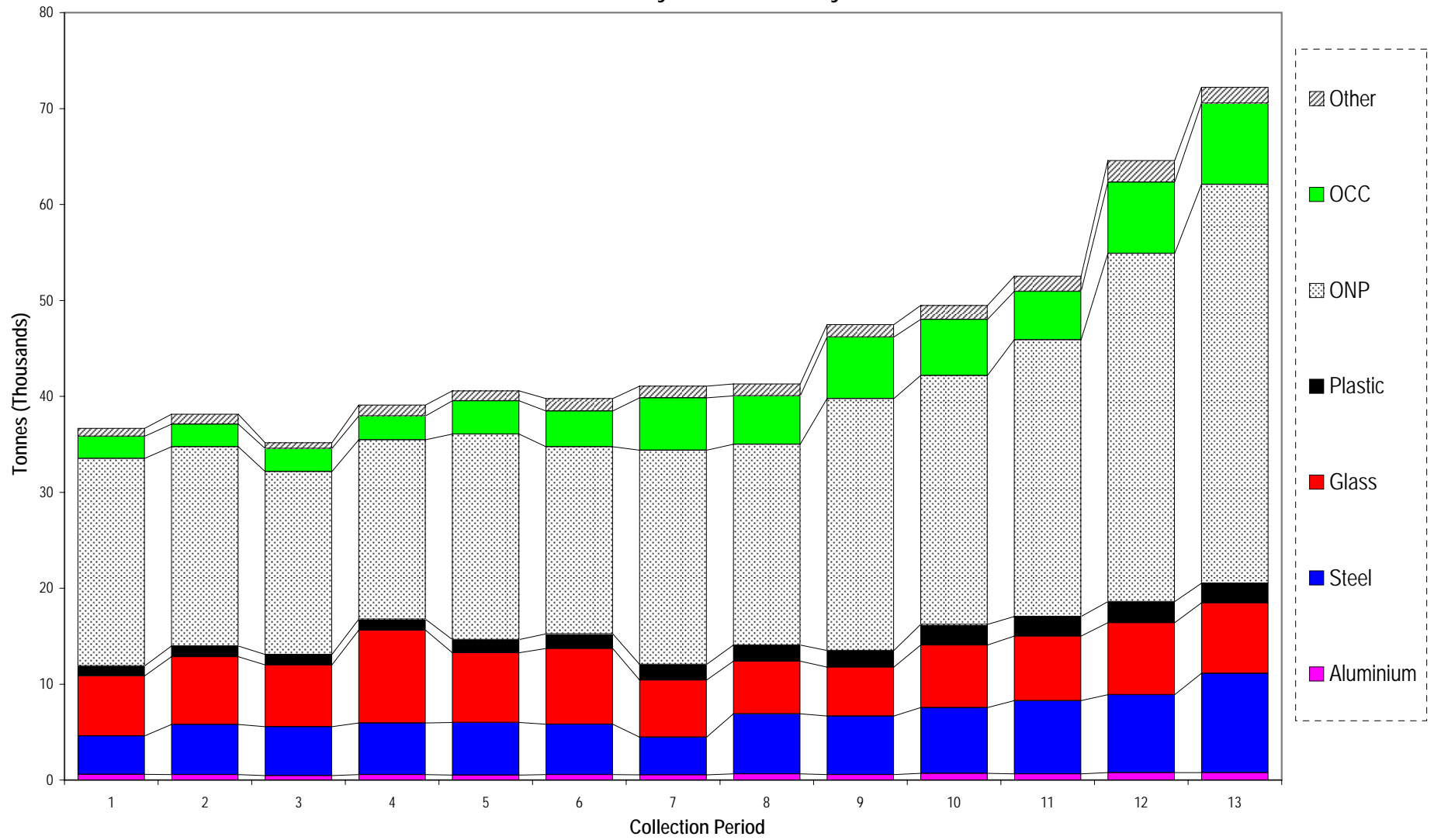
Time Series of Recovery of Dry Recyclables and Green/Organic Waste



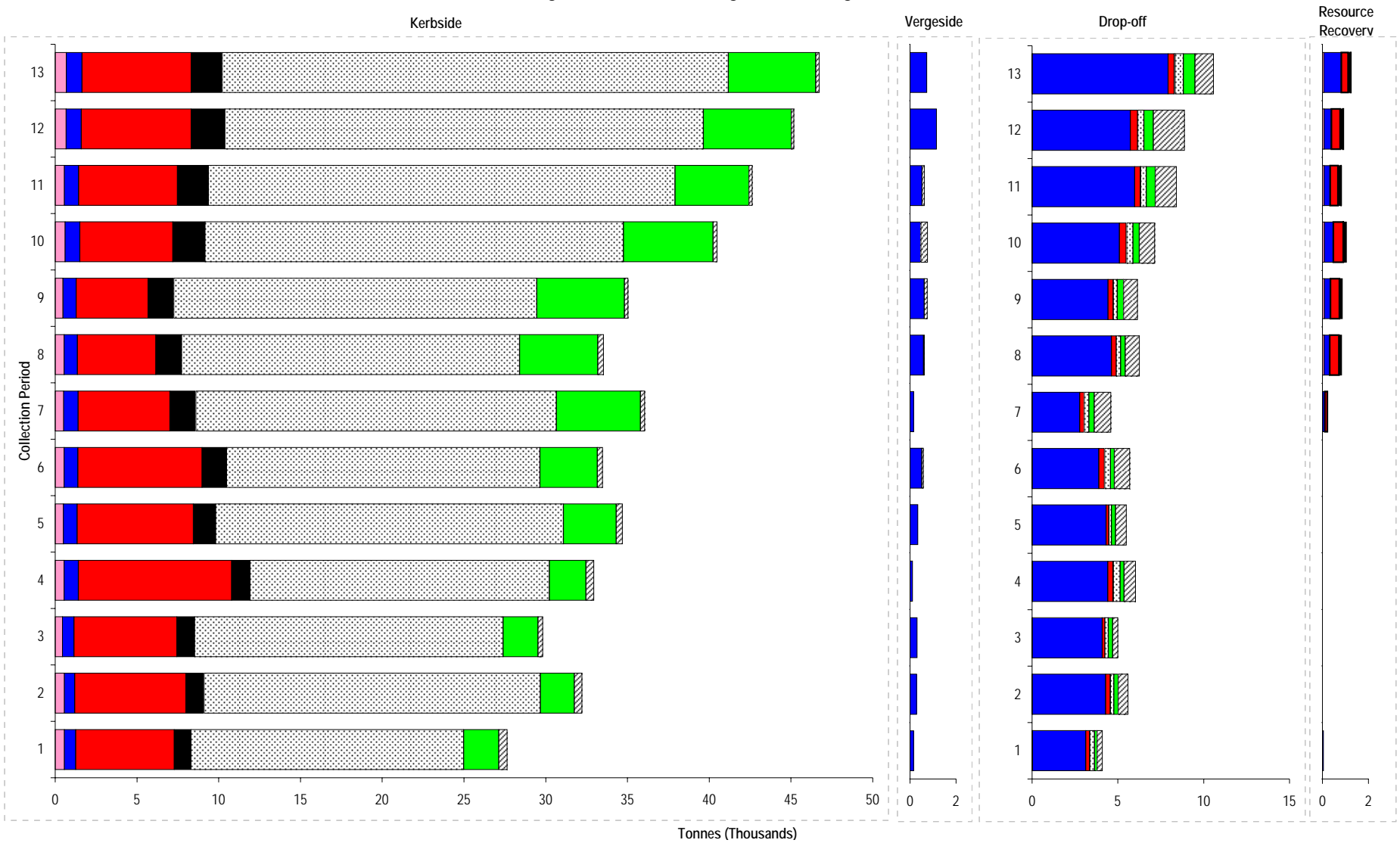
Time Series of Recovery of Dry Recyclables and Green/Organic Waste by Material Source



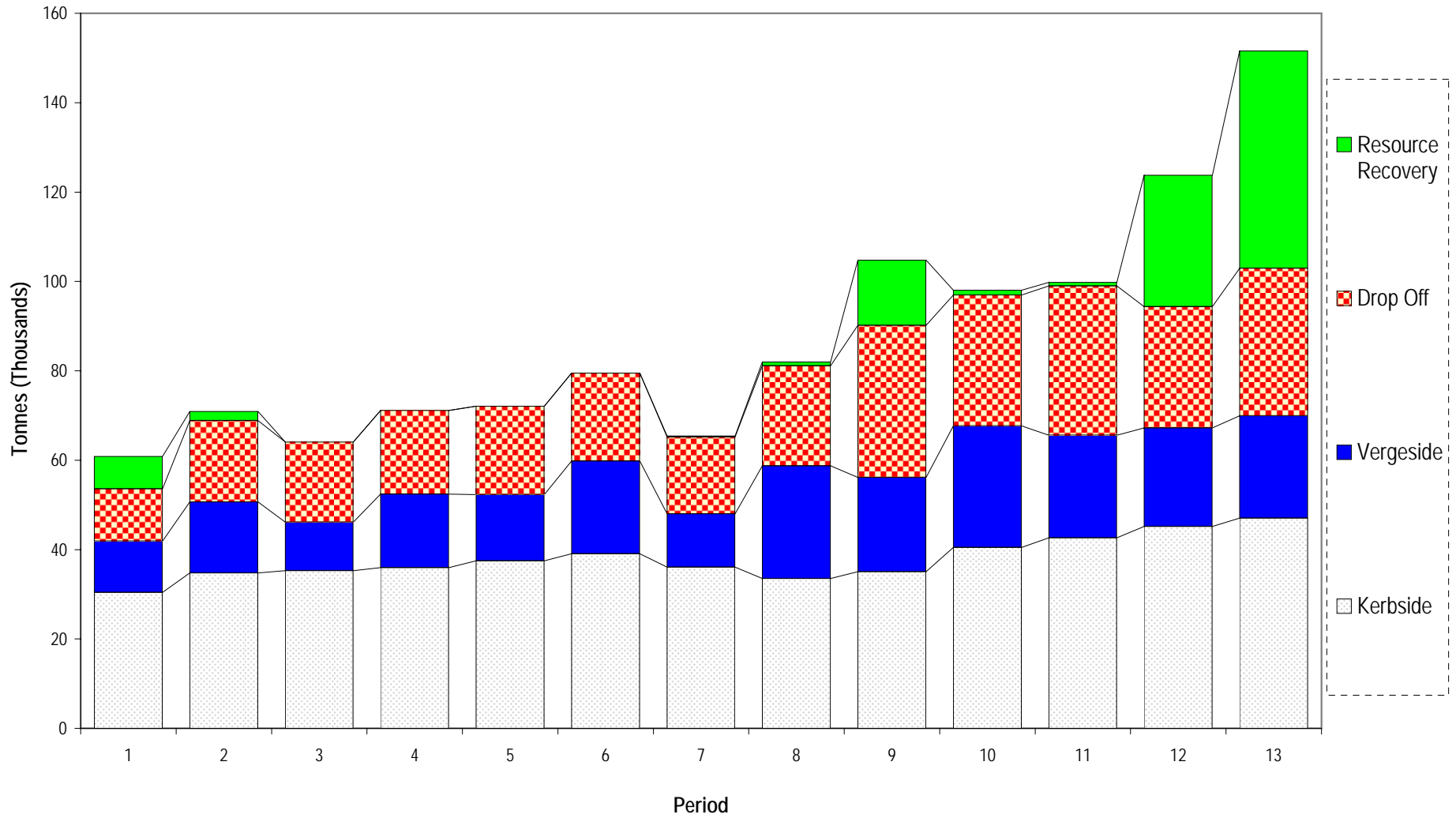
Time Series of Dry and Other Recyclables



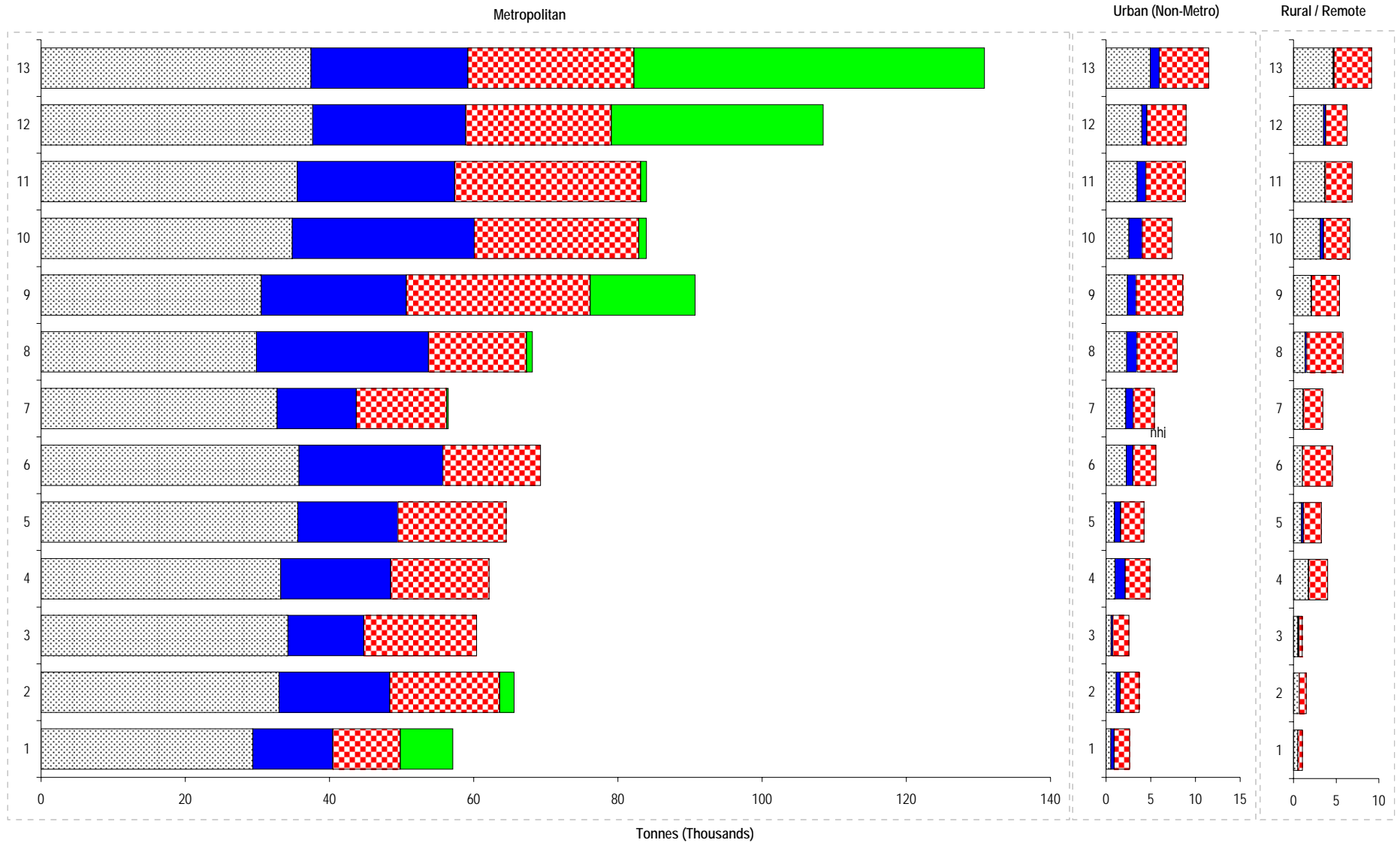
Time Series of Dry and Other Recyclables by Material Source



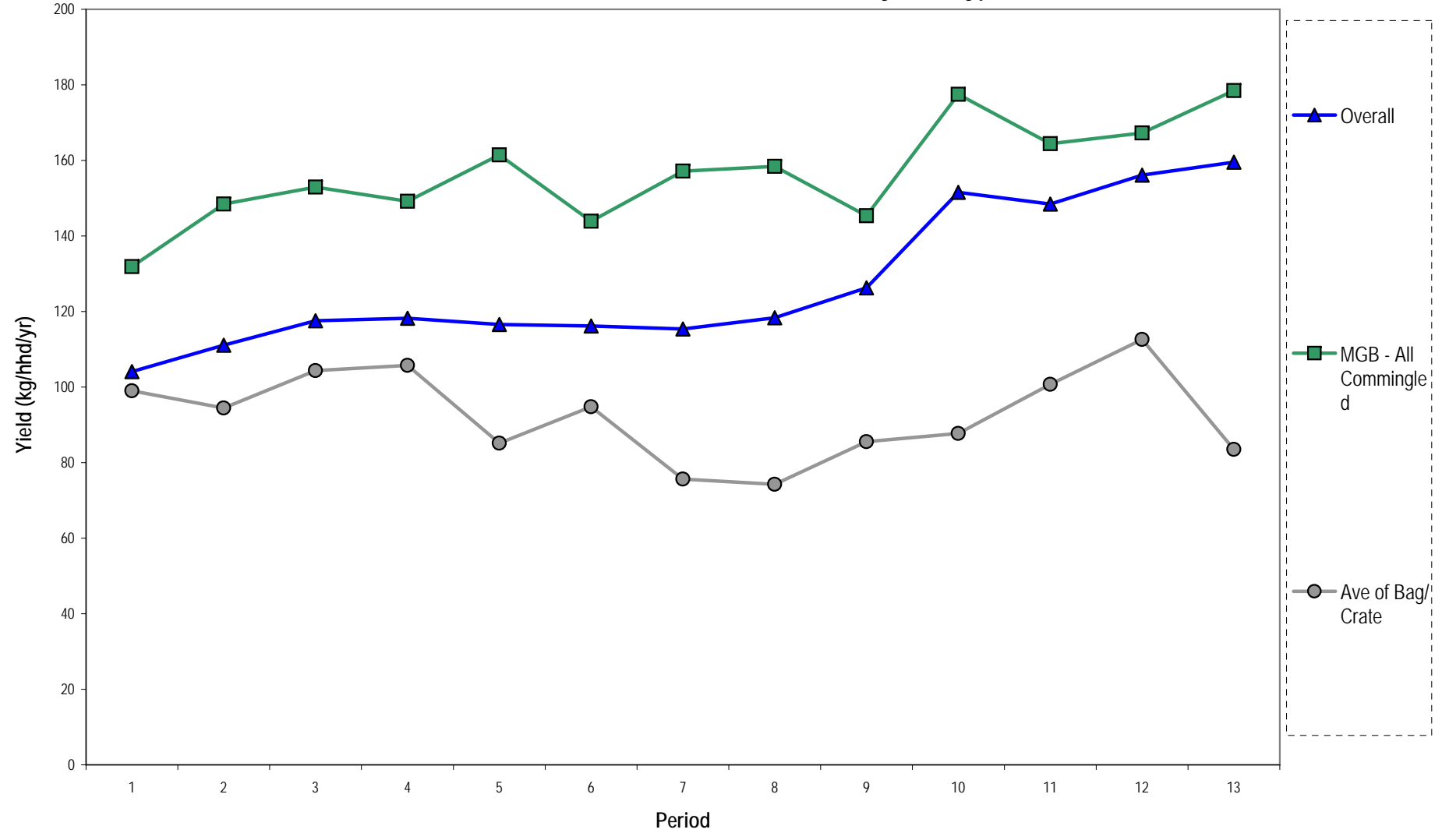
Comparison of Tonnages from Different Collection Sources



Time Series Tonnages from Different Collection Sources by Class of Council



Time Series of Kerbside Yields from Different System Types



Time Series of Kerbside Yields from Different Council Classes

