

The background image shows a construction or demolition site. A large conveyor belt structure is visible on the left, extending towards the center. Below it, there is a large pile of rubble or debris. The sky is bright and slightly hazy, suggesting an outdoor setting. The overall tone is industrial and somewhat desaturated.

C&D Working Group

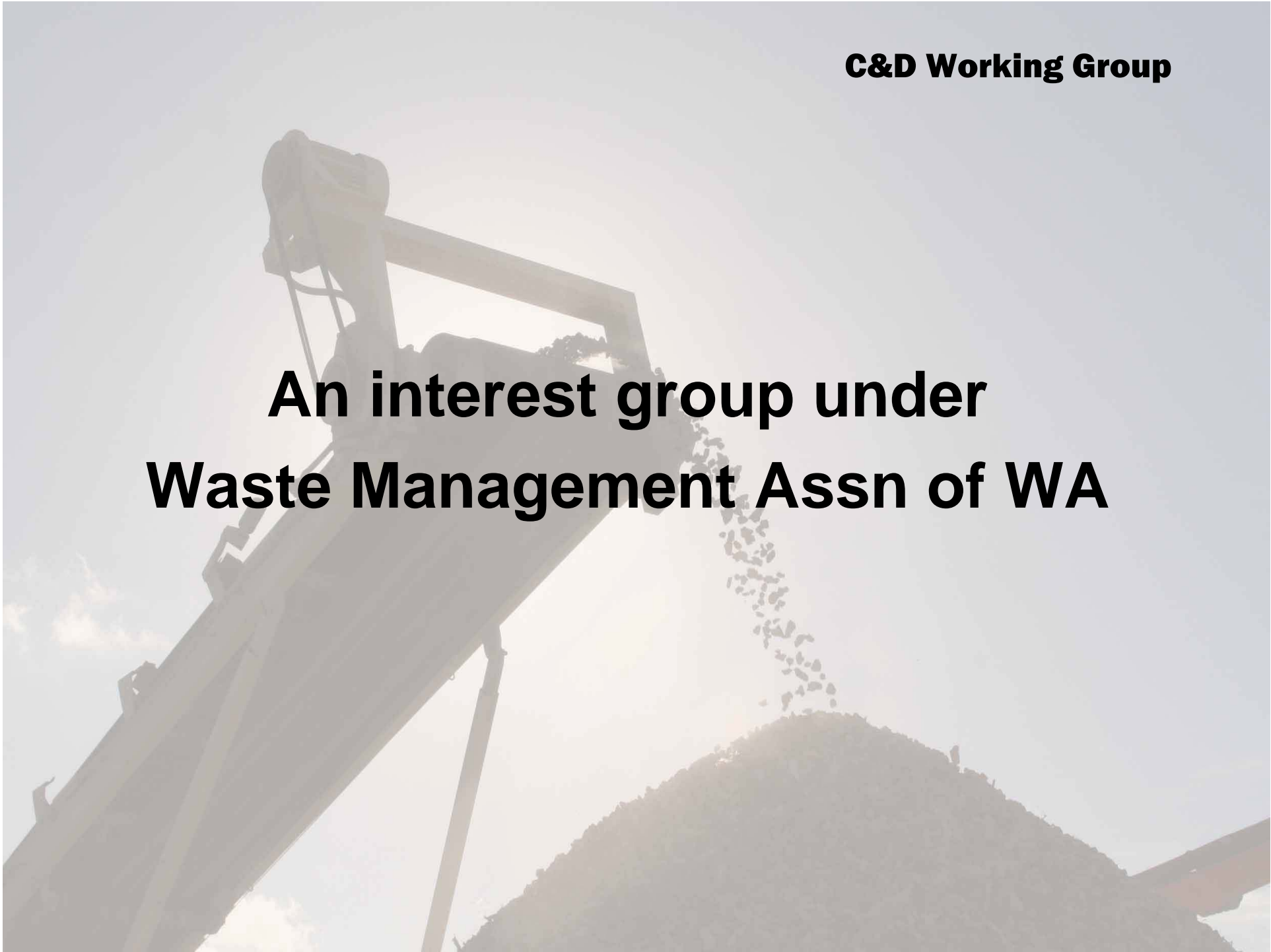
**Introduction to the
Construction & Demolition
Working Group**

Adrian Lester – Chairman, C&D Working Group



C&D Working Group

**An interest group under
Waste Management Assn of WA**



C&D Working Group

Recyclers represented:



Recyclers represented:

- **Allearth Group, Maddington**



Recyclers represented:

- **Allearth Group, Maddington**
- **Capital Demolition, Bayswater**

Recyclers represented:

- **Allearth Group, Maddington**
- **Capital Demolition, Bayswater**
- **C&D Recycling, Hazelmere**

Recyclers represented:

- **Allearth Group, Maddington**
- **Capital Demolition, Bayswater**
- **C&D Recycling, Hazelmere**
- **Veolia (Ex Collex), Jandakot**

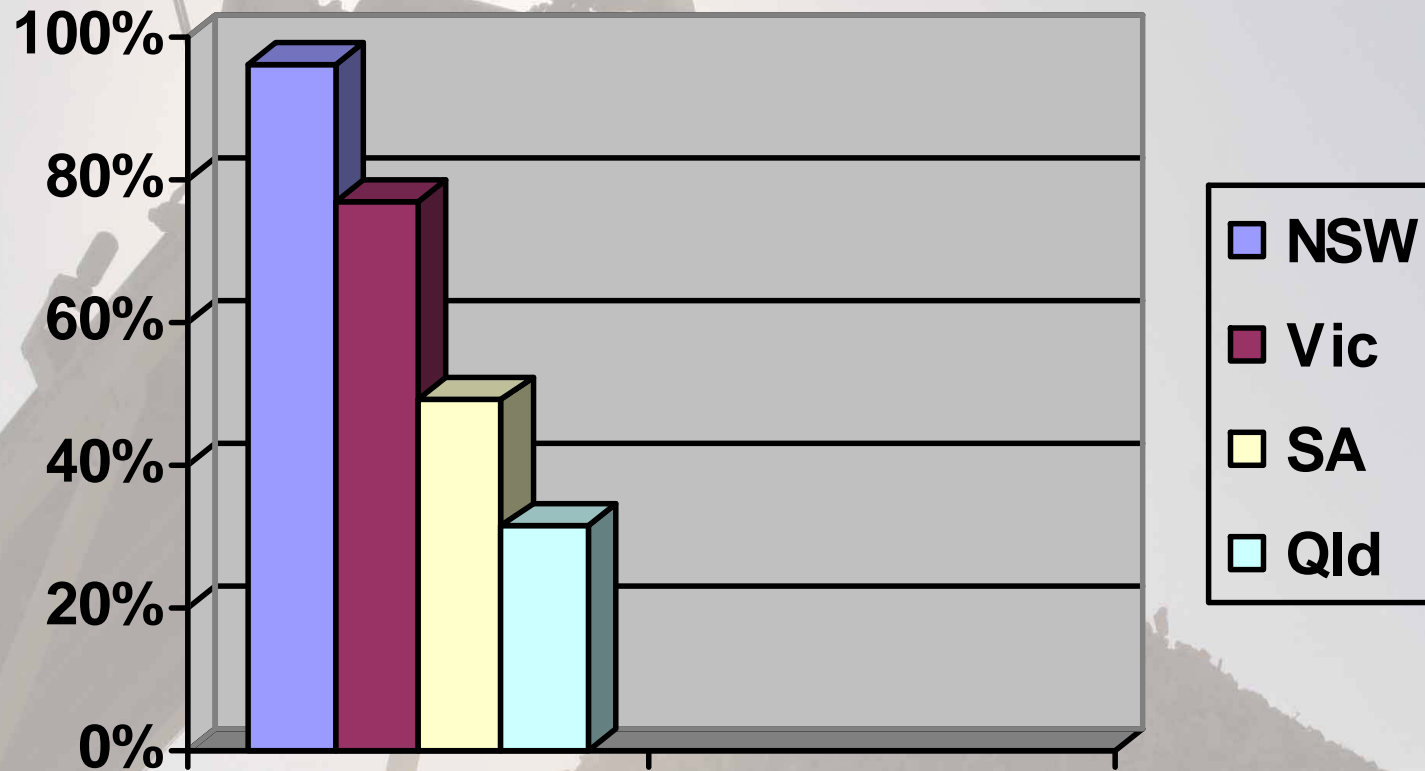
Group also represented by:

- **Users of recycled C&D Materials**
- **Local Government representatives (Canning, Mandurah, Kwinana)**
- **State Govt. departments and authorities - DEC, MRWA**
- **Consultants to waste industry and local government**

Group objectives:

- **Reduce volume of C&D waste to landfill with environmental and financial efficiency**
- **Promote use of recycled products to business and Government**
- **Educate industry and Government on benefits of recycling**
- **Provide a cohesive balanced group as a reference point for industry and government**

National C&D Recycling rates:

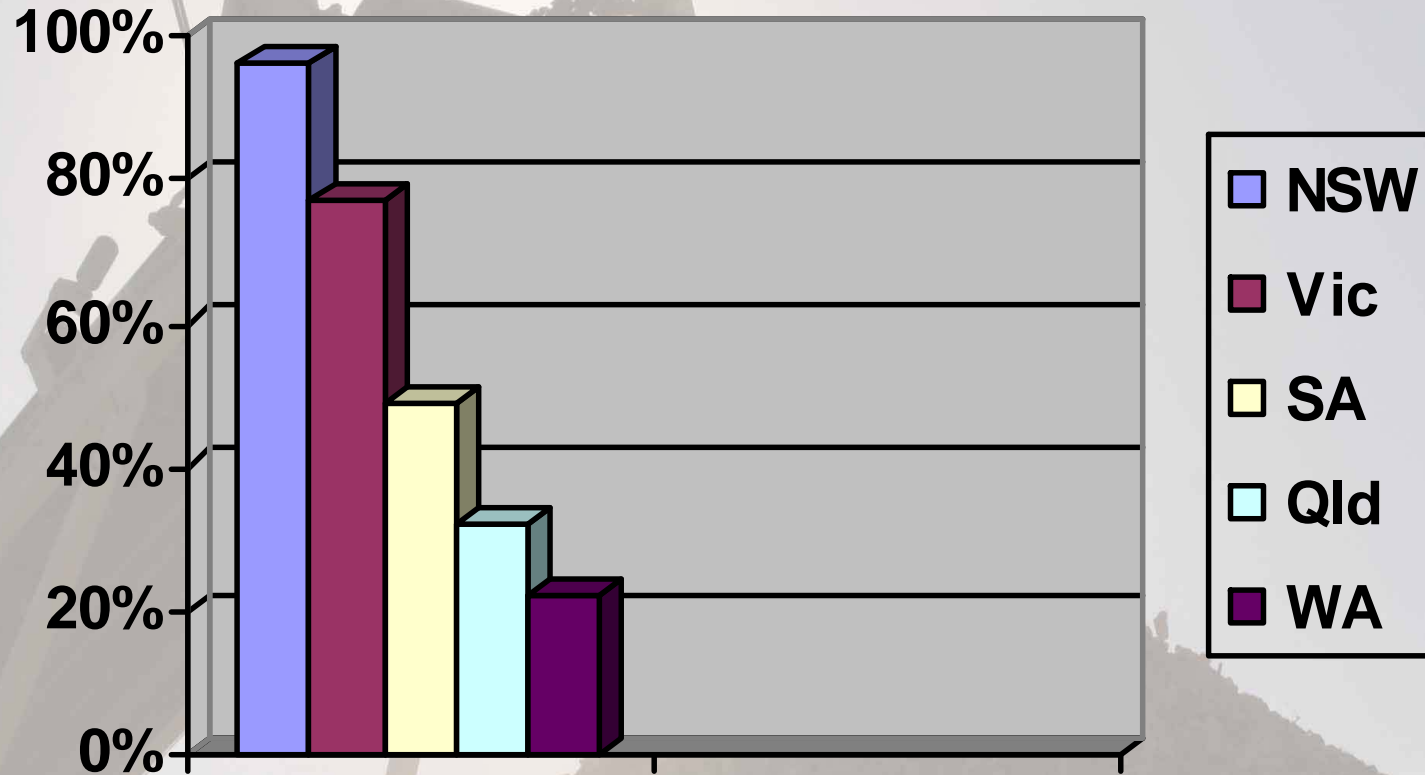


C&D Working Group

Where the bloody hell are we?



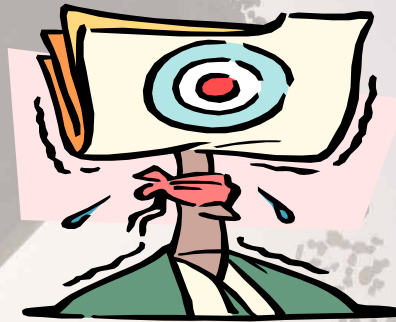
National C&D Recycling rates:



C&D Working Group

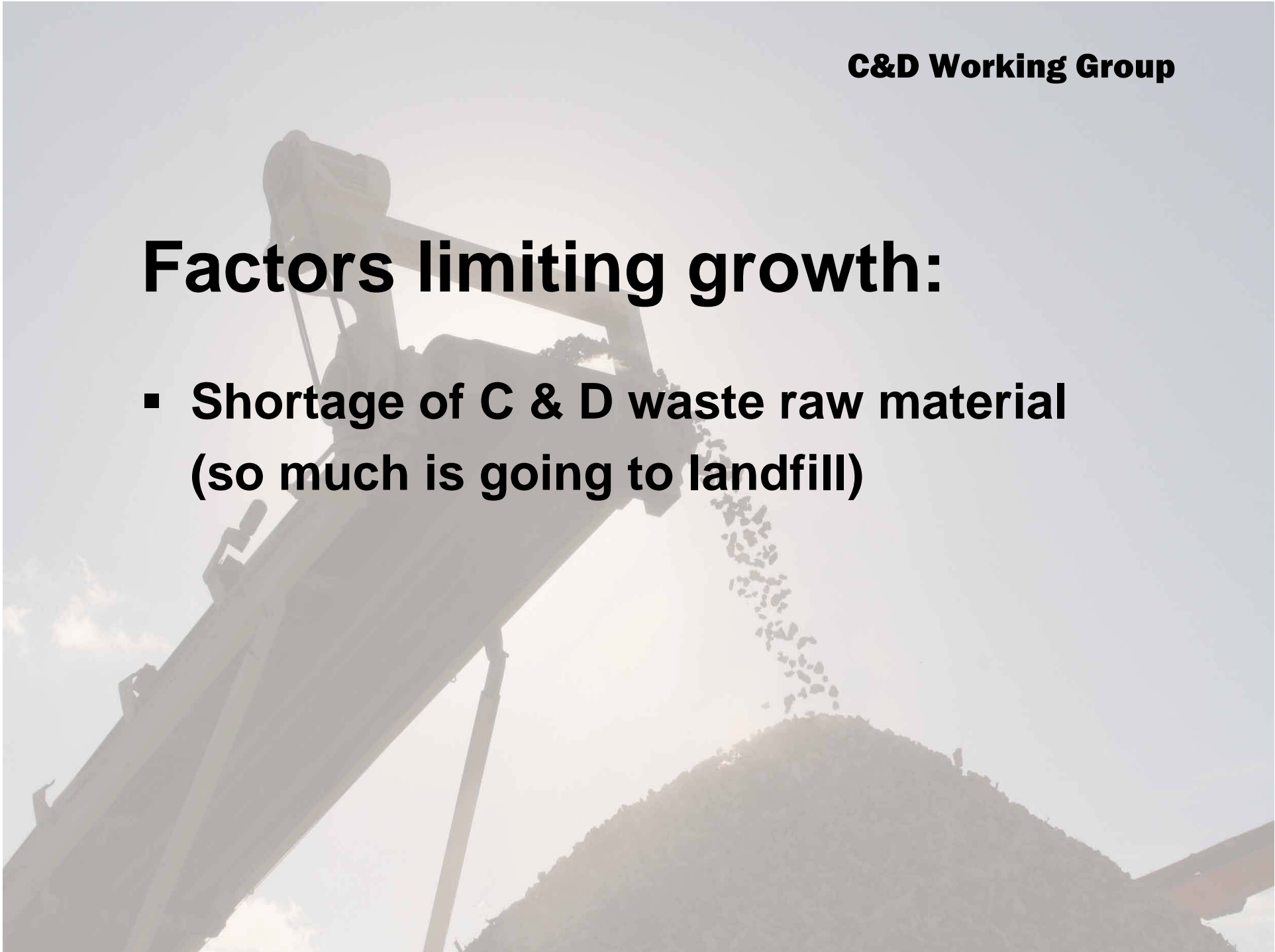
Material Type	2004/05	2005/06	2006/07	% Change
C&D	333,870	364,370	403,870	11
Glass	18,000	18,000	20,800	16
Rubber	1,900	5,000	5,550	11
Total	1,363,820	1,617,470	1,708,300	

Factors limiting growth:



Factors limiting growth:

- **Shortage of C & D waste raw material
(so much is going to landfill)**



Factors limiting growth:

- **Shortage of C & D waste raw material (so much is going to landfill)**
- **Outdated thinking - “It’s waste, not a resource”, lack of source separation**

Factors limiting growth:

- **Shortage of C & D waste raw material (so much is going to landfill)**
- **Outdated thinking - “It’s waste, not a resource”, lack of source separation**
- **“Recycled material can’t be as good as virgin product”, - MRWA, VicRoads**

Factors limiting growth:

- **Shortage of C & D waste raw material (so much is going to landfill)**
- **Outdated thinking - “It’s waste, not a resource”, lack of source separation**
- **“Recycled material can’t be as good as virgin product” - MRWA, VicRoads**
- **Cheap landfill**

So what have we been doing?

- **SWIS funding to test Recycled Roadbase**

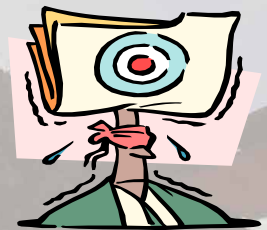


So what have we been doing?

- **SWIS funding to test Recycled Roadbase**
- **Communicate results to industry, government**

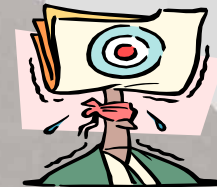
So what have we been doing?

- **Use SWIS funding to test recycled products**
- **Communicate results to industry, government**
- **Provide samples and advice to potential users** Kwinana, Busselton



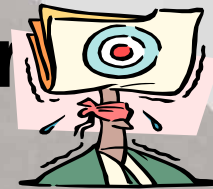
So what have we been doing?

- **Use SWIS funding to test recycled products**
- **Communicate test results to industry, government**
- **Provide samples and advice to potential users**
- **Liaising with SGA trial section in Mandurah – Bunbury Hwy**



So what have we been doing?

- **Use SWIS funding to test recycled products**
- **Communicate test results to industry, government**
- **Provide samples and advice to potential users**
- **Liaising with SGA to trial section in Mandurah – Bunbury Hwy**
- **Advice to Waste Authority re Landfill Levies**



C&D Working Group



The C&D Working Group offers

- **Efficient and cost-effective disposal of C&D waste**
- **Samples and advice**
- **Availability of specification quality recycled materials**

We need you to:



- **Recognition of our industry as a logical disposal point for C&D waste**
- **Acceptance that recycled materials are a sound and cost effective alternative for virgin materials**
- **Willingness to specify recycled products**

Our goals for the year ahead:

- **Attract more source separated C&D waste to our facilities**
(Belmont, Canning, Kalamunda, VicPk, Gosnells)
- **Achieve approved supplier status with major specifiers**
(Canning, Rockingham, Cottesloe leading the way)

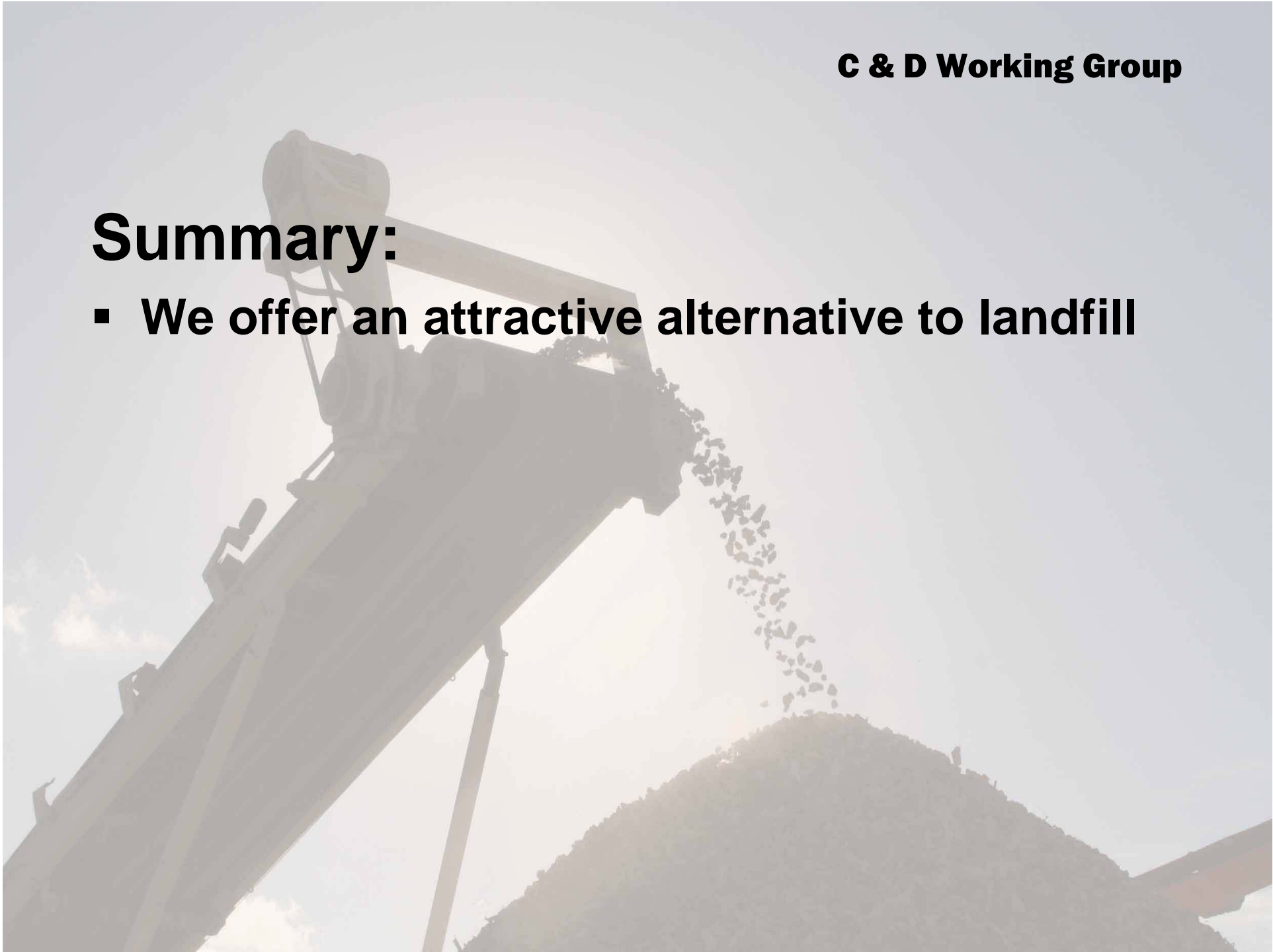
Our goals for the year ahead:

- **Attract more C&D waste to our facilities**
- **Achieve approved supplier status with major specifiers**

More in – More out

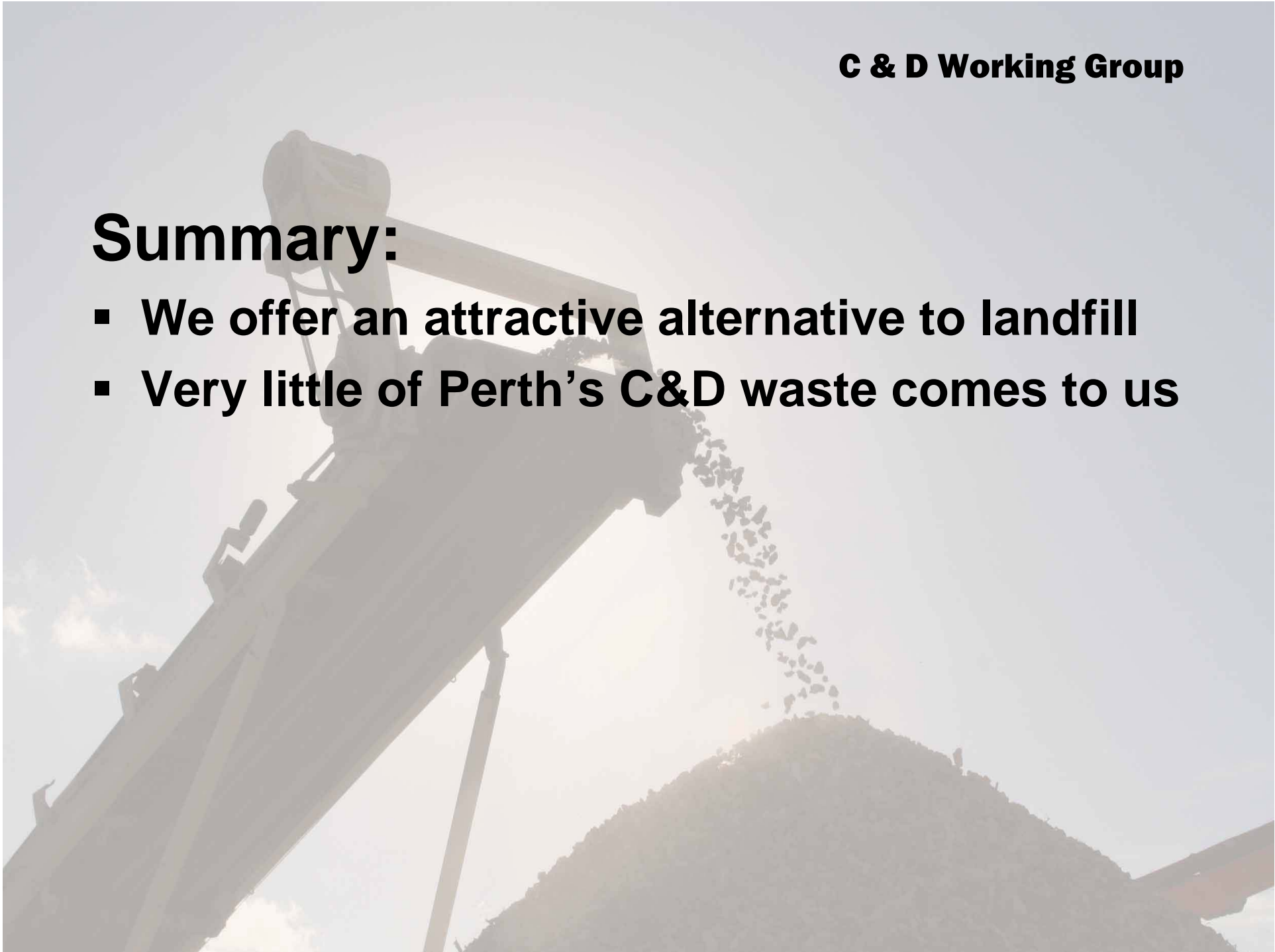
Summary:

- **We offer an attractive alternative to landfill**



Summary:

- **We offer an attractive alternative to landfill**
- **Very little of Perth's C&D waste comes to us**



Summary:

- **We offer an attractive alternative to landfill**
- **Very little of Perth's C & D waste comes to us**
- **We need more support from government instrumentalities and local authorities**

Summary:

- **We offer an attractive alternative to landfill**
- **Very little of Perth's C & D waste comes to us**
- **We need more support from Government instrumentalities and local authorities**
- **We have the capacity to handle 100% of Perth's C&D waste **NOW****

Summary:

- **We offer an attractive alternative to landfill**
- **Very little of Perth's C & D waste comes to us**
- **We need more support from Government instrumentalities and local authorities**
- **We have the capacity NOW to handle 100% of Perth's C&D waste**
- **We can produce specification-quality material consistently and in volume**

Like to keep in touch?:

- **Quarterly meetings**
- **Join our mailing list**
- **Who do you call ?**

Chairman – Adrian Lester

Secretary – Bruce Bowman

The logo features the letters 'C', '&', and 'D' in a bold, sans-serif font. The 'C' and 'D' are black, while the ampersand is a vibrant orange. The entire logo is contained within a thin black rectangular border.

C&D

RECYCLING

