



MWAC Information Bulletin

MUNICIPAL WASTE ADVISORY COUNCIL
"Getting the Environment Right"

ISSUE 157 JANUARY 2012

INSIDE THIS ISSUE

COUNCILLOR REQUIRED FOR MWAC	2
HHW MASTER INTRODUCING MR ROWAN LATHAM	2
ASBESTOS DEVELOPMENTS ASBESTOS INFOPAGE	2
NEW OFFICE FOR UTILITIES WA PREMIER ANNOUNCES NEW PUBLIC UTILITIES OFFICE	2
WASTE EDUCATION IN ROCKINGHAM WASTE EDUCATION CENTRE OPENED	3
REDUCING C&D IN WA WASTE AUTHORITY AND MAIN ROADS DIVERT C&D	3
CARERS COURSE WESTERN EARTH CARERS COURSE BEGINS IN MARCH	3
NSW LEVY REVIEW PREMIER REQUESTS SUBMISSIONS ON THE NSW WASTE AND ENVIRONMENT LEVY	4
CASHING IN ON CANS UPDATE ON THE NT SCHEME	4
STORES OF KNOWLEDGE FEDERAL GOVERNMENT DEVELOPES C&D GUIDE AND KNOWLEDGE STORE	4
LESS IS MORE WORKSHOPS WORKSHOPS ON CONSUMING LESS	4
PAY-AS-YOU-THROW HONG KONG PLANS TAX ON WASTE DISPOSAL	5
HOW TO: STOP DRUNKS INGENIOUS METHODS OF CLEARING OUT DRUNKS	5
SUNNY RECYCLING RECYCLING SOLAR PANELS	5
NEW CHURCH FOR CHRISTCHURCH MADE FROM PLASTIC AND CARDBOARD	5

PACKAGING OPTIONS

The Federal Government is on the road again, carrying out consultation on the Packaging Impacts Consultation Regulatory Impact Statement. The Consultation RIS outlines several options for increasing packaging recycling and reducing litter. Options include two types of Container Deposit Schemes.

Eleven public forums will be held across Australia, from mid-February to early-March.

These forums will summarise the key findings of the Consultation RIS and the RIS process and provide attendees with the opportunity to ask questions and provide feedback.

The dates for sessions in Western Australia are:

- Bunbury, Tuesday, 21 February, 9:00am-11:30am (venue TBC); and
- Perth, Wednesday, 22 February, 9:00am-11:30am (venue TBC).

To register for a forum email waste.paper@derm.qld.gov.au and include your name, organisation, contact details and number/names of attendees.

Venue details will be provided to those who register closer to the date of the forum.

MWAC will be developing a Submission on the Consultation RIS on behalf of the WA Local Government sector.

A draft Submission will be distributed to all Local Governments in early February. Local Governments are also encouraged to submit their own Submissions.

Comments on the Association's Draft Submission on the Consultation RIS will close **COB Friday, 23 March.**

For further information regarding the WALGA Submission, contact Waste Policy Coordinator Erin Fuery on (08) 9213 2086 or efuery@walga.asn.au, or visit www.wastenet.net.au for regular updates.

COAG STANDING COUNCIL ON ENVIRONMENT AND WATER

PACKAGING IMPACTS CONSULTATION REGULATION IMPACT STATEMENT

DECEMBER 2011

REVIEW OF METRO LG'S

A forum attended by more than 70 leaders from all but one of the Perth metropolitan Local Governments, has been held, with the aim of identifying a preferred future for the sector in response to the request for Submissions to the Metropolitan Local Government Review Panel.

Forum participants considered four models ranging from a simple refinement of the current Local Government structure, through to a single-council model. There was a strong preference for two models that reinforced strategic cooperation.

WALGA President Mayor Troy Pickard said the two preferred models would now be considered by the President's Advisory Group to recommend a position for endorsement

from the WALGA Zones and State Council and Submission to the Panel.

MWAC has developed a Submission, to be incorporated into the WALGA Submission, on waste management issues relating to structural reform.

There were many opinions at the forum on all aspects of the review, including the models that were presented and even the need for a review.

There was also a lot of concern about how to define a structure that deals not only with the current metropolitan population, but also has the scope and flexibility to adapt to significant population change over the next 50 years.



COUNCILLOR REQUIRED

A nomination is sought for one Elected Member (metropolitan OR non-metropolitan) for the Municipal Waste Advisory Council (MWAC). Nominations close **COB Monday 30 January 2012** and should be emailed to nominations@walga.asn.au

MWAC is a delegated Committee of the WA

Local Government Association with responsibility for waste management

For more information, please contact Manager, Waste and Recycling, Rebecca Brown on 9213 2063, email rbrown@walga.asn.au or visit the WasteNet website www.wastenet.net.au

HHW MASTER

We are pleased to introduce Mr Rowan Latham as the new MWAC Program Coordinator. Amongst many things, Rowan will be looking after the Household Hazardous Waste Program.



Please join us in welcoming Rowan to the waste scene in Western Australia. Rowan's contact details are rlatham@walga.asn.au and 9213 2062.

(Image: Tony (left) and Rowan (right) discussing HHW storage at Bunbury Harvey Regional Council)

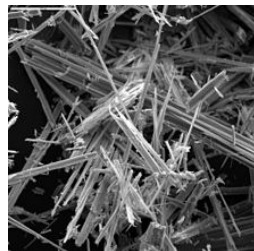
Rowan joins us from a stint in the UK, and previously the 'Land of the Long White Cloud' (the rocking City of Christchurch, NZ).

A survey carried out by the Plastics and Chemicals Industries Association (PACIA) on plastics consumptions, waste and recycling in Australia... has revealed that half of the nation's plastic collected for recycling is exported.

The proportion of waste plastics reprocessed in Australia has decreased rapidly, from 74.0% in 2000 (calendar year), to 50.2% in 2010-11.

(Source: www.pacia.org.au)

ASBESTOS DEVELOPMENTS



A WALGA Infopage has recently been distributed to Local Governments in WA updating the sector on the progress of a number of asbestos management-related activities.

of Local Government experiences associated with asbestos and demolition, removal and illegal dumping;

- The Asbestos Code of Practice;
- The Asbestos Interagency Taskforce; and
- The Murdoch University Asbestos Network.

For more information, visit the WasteNet website at www.wastenet.net.au.

The Infopage includes information on:

- The Department of Health's recent survey

NEW OFFICE FOR UTILITIES



The WA Premier Colin Barnett has announced a new Public Utilities Office will be established within the Department of Finance.

The decision to establish a new Public Utilities Office is a result of a recommendation from the Economic Audit Committee.

The move is in line with the Government's priority to build the policy capacity and capability of the public sector and has the support of the Public Sector Commissioner.

(Source: www.mediastatements.wa.gov.au)

Mr Barnett has said that initially, the Public Utilities Office would provide advice to the State Government on energy policy but over time it could also have responsibility for water and waste management policy.

www.wastenet.net.au

WASTE EDUCATION IN ROCKINGHAM



The City of Rockingham has officially opened a new Waste Education Centre at the Millar Road landfill site.

The new Education Centre will be named after the City's first Waste Education and Promotions Officer, Ken James, who retired in 2010.

The Centre is built using environmentally sensitive principles, facing north east to make use of natural light and capture afternoon breezes. The design incorporates a thermal wall, louvered windows, fans, smart wiring and solar panels.

Another new addition to the site is a giant pelican made from items found at the landfill such as a kayak for a beak, a chest made of a car bonnet, and ceiling fan 'feathers.' The pelican was created by sculpture students at the Challenger Institute of Technology over two terms to raise the profile of recycling.

The Centre will primarily be a learning facility where people can learn about waste services and recycling for a sustainable future. The Centre can now be booked for use by schools or groups by phoning 9528 8550.

(Source: www.rockingham.wa.gov.au)

REDUCING C&D IN WA



More than one million tonnes of recycled Construction and Demolition (C&D) waste could be diverted from landfill and used to build roads under a landmark agreement between Main Roads WA and the Waste Authority.

C&D waste is currently responsible for 50% of all waste disposed to landfill in WA. WA has one of the lowest rates of recycling this material in the country (approximately 30%).

In July 2011, the Minister for Environment Mr Bill Marmion asked the Waste Authority to investigate the potential to improve the use of recycled C&D materials in State Government civil works.

A report titled *Increasing the use of recycled materials in State Government civil works* was finalised in October, with nine recommendations to increase the reuse of C&D waste. One of these involved negotiating a new specification for the use of recycled C&D materials in road base.

Main Roads WA has endorsed a revised specification, also adopted by the Institute of Public Works Engineering Australia for the use of C&D in road bases.



(Source: www.mediastatements.wa.gov.au)

CARERS COURSE

The next Western Earth Carers Course will begin **Wednesday, March 14** and runs for five sessions over three weeks.

The course is free, and will include tips on reducing waste and green cleaning, include a tour of a landfill and provide information on composting and worm farming.

Come along and meet likeminded sustainability enthusiasts. Earth Carers are welcome to come along to any sessions you

may have missed previously or come as a refresher.

For more information, visit www.earthcarers.org.au or phone 9384 4003.



The Japanese Plastic Waste Management Institute has found that Japan recycled 77% of its plastic in 2010.

The recycling list now includes boxes, cases, cups, containers and plates. Residents are also able to recycle trays, tube-shaped containers, lids and caps.

(Source: www.wasterecyclingnews.com)

www.wastenet.net.au

NSW LEVY REVIEW

The NSW Minister for the Environment Robyn Parker has called for Submissions on the review of the NSW Waste and Environment Levy.

Ms Parker said the NSW Government was seeking input from Local Governments, waste and recycling industries and the wider community on the impacts and operations of the levy imposed on each tonne of waste disposed in landfill.

Interested parties are invited to provide written submissions addressing one or more of the terms of reference:

- The impact on the recycling industry;
- The impact on households;
- Funding arrangements to facilitate greater investment in infrastructure with Local Government and industry; and
- The impact on illegal dumping, including the proper disposal of asbestos.

For more information, visit www.environment.nsw.gov.au

CASHING IN ON CANS

Alice Springs Town Council Mayor Damien Ryan has announced that the Council will continue to run its Cash for Containers Program until the end of the month to assist with the transition to the Northern Territory Government Scheme.

The Alice Springs collection scheme has been running for over two years, paying five cents per container, and has surpassed the 16 million milestone.

Cans and bottles stockpiled from the days before the Northern Territory Scheme, are not eligible for a refund. Over 85,000 cans and 35,000 bottles were dropped off at the Council depot in one Saturday alone.

The same conditions apply as the State Scheme, limiting the number of containers to 500 per person. The depositors must be Alice Springs residents.



(Source: www.abc.net.au)

STORES OF KNOWLEDGE

The Federal Department of Sustainability, Environment, Water, Population and Communities has released a guide titled the *Construction and Demolition Waste Guide – recycling and re-use across the supply chain*, to assist in developing markets for reusing Construction and Demolition (C&D) waste.

The Guide contains a number of Australian case studies, highlighting best practice waste management and resource recovery in the C&D sector.

The Department has also launched a Knowledge Store on its website, to showcase documents and case studies that relate to recycling and reuse, avoidance and reduction of waste. All Australian State, Territory and Local Governments, industry, and community organisations are invited to submit case studies for the Knowledge Store.

For more information, visit www.environment.gov.au

LESS IS MORE WORKSHOPS

On **Saturday, 18 February** a full day of community workshops will be held on a wide range of topics concerned with consuming less. These topics range from green cleaning products to bicycle maintenance, making your own ginger beer, and reuseable menstrual pads, as well as Eco Faeries for the kids, and interactive art for everyone.

to take charge of their lives and step outside the consumption cycle.

The workshops will be from 10am-4pm at The Grove, off Stirling Hwy in Cottesloe (right near the Cottesloe train station). Entry is free. A full workshop listing will be on the website when available.

The workshops aim to show participants how

(Source: <http://lessismorefestival.blogspot.com>)

The Darwin Lions Beer Can Regatta is on **Sunday, 15 July.**

Every dry season more than 15,000 people pack Mindil Beach, Darwin to watch dozens of beer can boats do battle.

(Source: www.abc.net.au/news and www.beercanregatta.org.au)



www.wastenet.net.au

PAY-AS-YOU-THROW

Hong Kong has announced plans to introduce a "pay-as-you-throw" tax on rubbish disposal. Under the new scheme, residents would be charged based on how much rubbish they throw out.

Official data shows that the city generates about 19,000 tonnes of solid waste every day, with 9,100 tonnes dumped into landfills. Two thirds of this is domestic waste. Only 52%

of the total waste is recycled.

This system has also been implemented in countries such as Taiwan, South Korea, Japan and New Zealand.

(Source: www.google.com/hostednews)



HOW TO: STOP DRUNKS

An English Local Government has begun using pig dung to keep people away from a woodland where there had previously been a number of people drinking and taking illicit drugs.

Elderly residents in Middlesbrough, in north-east England, had complained about young people smoking cannabis and drinking alcohol in a woodland nearby.

After inspecting the area and finding litter such as smoking implements, Local Government officers thinned out the trees and spread a thick layer of pig dung on the ground.

Feedback from the residents indicated that this measure has proved to be highly successful.

(Source: www.abc.net.au)

SUNNY RECYCLING

A German company named Loser Chemicals claims it has developed a process to recycle rare earth metals from old solar panels.

The panels are washed in a chemical mixture, so that rare earth elements such as tellurium, gallium, molybdenum and indium can be recovered.



disposal of solar panels, and change the way engineers and scientists source rare earth metals for new technology.

Rare earth metals increased in value by over 300% in 2010 alone. Some people believe that global demand could outstrip supply by 2016.

(Source: www.thelocal.de and RRF WINS #44-2011-December 16, 2011)

It is hoped the process will revolutionise the

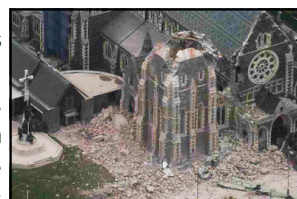
NEW CHURCH FOR CHRISTCHURCH

A plastic and cardboard church, designed by the Japanese architectural firm Shigeru Ban, will temporarily replace the Christchurch Cathedral that was damaged in the New Zealand Christchurch earthquake. The new structure will not be permanent, but has the ability to be in place for up to 20 years.

Representatives of the City's Anglican cathedral contacted Shigeru Ban Architects last April, after seeing its design for a paper church in Kobe, Japan, which replaced a church that was destroyed in a 1995 earthquake.

A-frame structure, constructed mainly from large cardboard tubes. Twenty-foot long shipping containers will form the building's base. The roof will be manufactured from corrugated PC sheets.

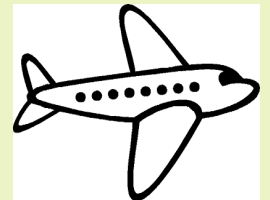
Construction begins in January and will take three months. Shigeru Ban Architects chose cardboard, as it is easy to source, recyclable and surprisingly strong.



The firm designed a US\$3.1 million tent-like,

(Source: www.wasterecyclingnews.com)

Heathrow Airport has released a report detailing how it manages the 110,000 tonnes of waste that it produces each year.



(Source: www.waste-management-world.com)



MUNICIPAL WASTE ADVISORY COUNCIL
"Getting the Environment Right"

A valuable resource for anyone interested
in waste in Western Australia



www.wastenet.net.au

CONTACT DETAILS

Manager, Waste & Recycling
Ms Rebecca Brown
Tel: 08 9213 2063
Email: rbrown@walga.asn.au

MWAC Program Coordinator
Mr Rowan Latham
Tel: 08 9213 2062
Email: rlatham@walga.asn.au

MWAC Policy Coordinator
Ms Erin Fuery
Tel: 08 9213 2086
Email: efuery@walga.asn.au

Waste Management Officer
Ms Heather Squire
Tel: 08 9213 2069
Email: hsquire@walga.asn.au

Office:
Local Government House
15 Altona Street,
WEST PERTH WA 6005
Postal Address:
PO Box 1544,
WEST PERTH WA 6872

2012 EVENTS CALENDAR

- 18 February** **Less is More Festival**
The Grove Library, 1 Leake St, Peppermint Grove, Western Australia
For more information, visit <http://lessismorefestival.blogspot.com>
- 21 February** **Bunbury Consultation Session on the Packaging Impacts Regulatory Impact Statement**
To register, email waste.paper@derm.qld.gov.au
- 22 February** **Perth Consultation Session on the Packaging Impacts Regulatory Impact Statement**
To register, email waste.paper@derm.qld.gov.au
- 14 March** **Western Earth Carers Course Begins**
For more information, visit www.earthcarers.org.au or phone 9384 4003
- 21-23 March** **Tissue World Americas 2012 Technical Conference**
Miami Beach, Florida, USA
For more information, visit www.tissueworld.com/americas
- 30 April - 2 May** **Waste Expo 2012**
Las Vegas Convention Center, Las Vegas, Nevada
For more information, visit www.wasteexpo.com
- 4-6 July** **6th International Conference on Waste Management and the Environment**
New Forest, UK
For more information, visit www.wessex.ac.uk
- 24-26 July** **Enviro 2012**
Adelaide Convention Centre, Adelaide
For more information, visit www.enviroconvention.com.au
- 11-14 September** **Waste & Recycle Conference 2012**
Esplanade Hotel, Fremantle, WA
For more information, visit www.wasteandrecycle.com.au

2012 SUBMISSIONS CALENDAR

- 17 February** **Nominations Close for the National Awards for Local Government**
For more information, visit www.regional.gov.au
- 23 March** **Local Government Comment Closes on the WALGA Submission for the Packaging Impacts Consultation RIS**
For more information, visit www.wastenet.net.au
- 30 March** **Submission Deadline for the Packaging Impacts Consultation RIS**
For more information, visit www.ephc.gov.au

WHAT IS MWAC?

The Municipal Waste Advisory Council (MWAC) is a standing committee of the Western Australian Local Government Association with delegated authority on municipal waste issues.

MWAC's membership includes the major Regional Councils (waste management). This makes MWAC a unique forum through which all the major Local Government waste management organisations cooperate.

MWAC focuses its work in three main areas:

- The proactive development of policy on priority issues;
- Comprehensive representation of Local Government views on legislation, regulations, administrative policy and related matters; and
- The delivery of grant funded programs consistent with Local Government priorities.



WALGA

www.walga.asn.au

